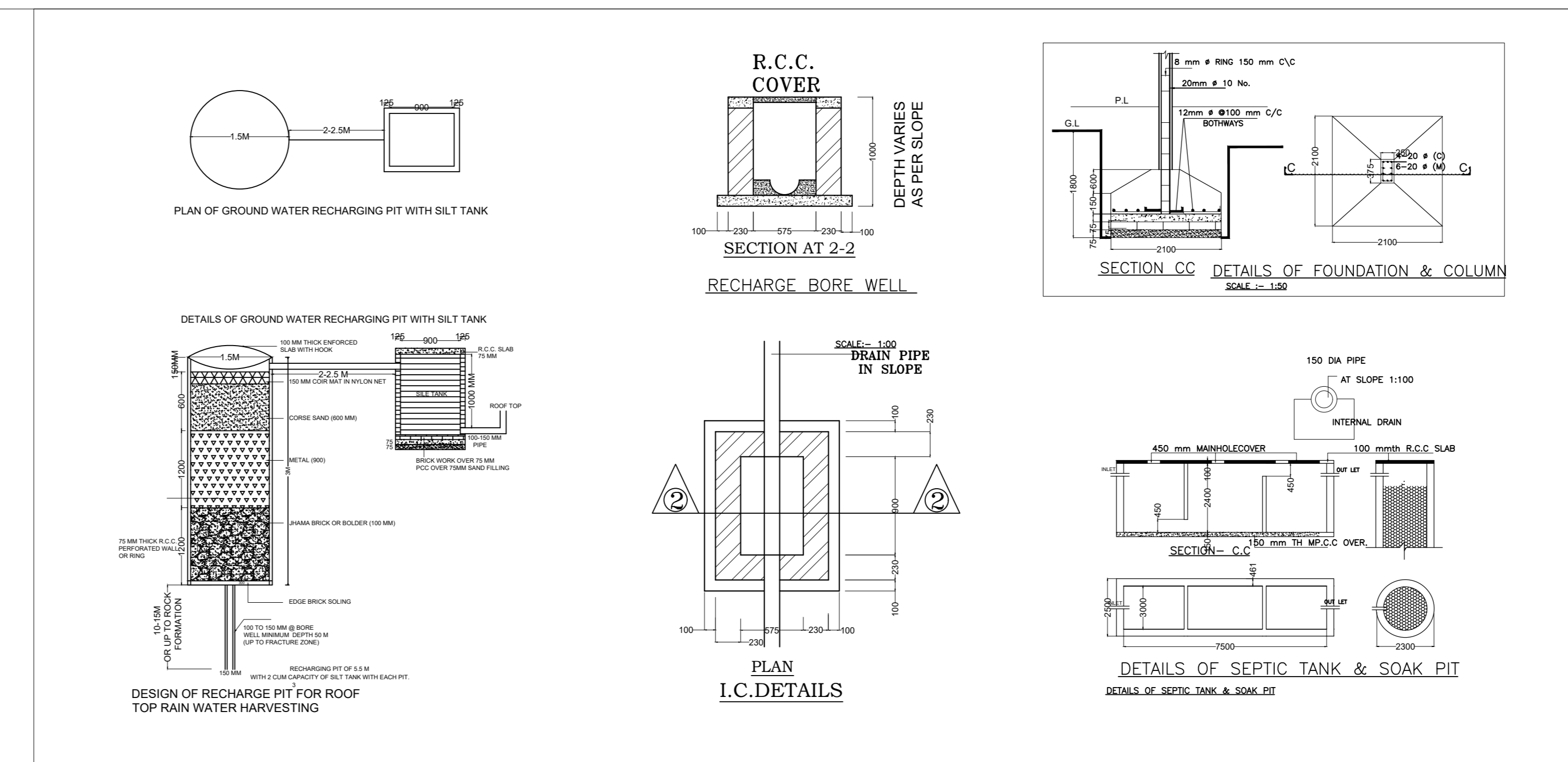
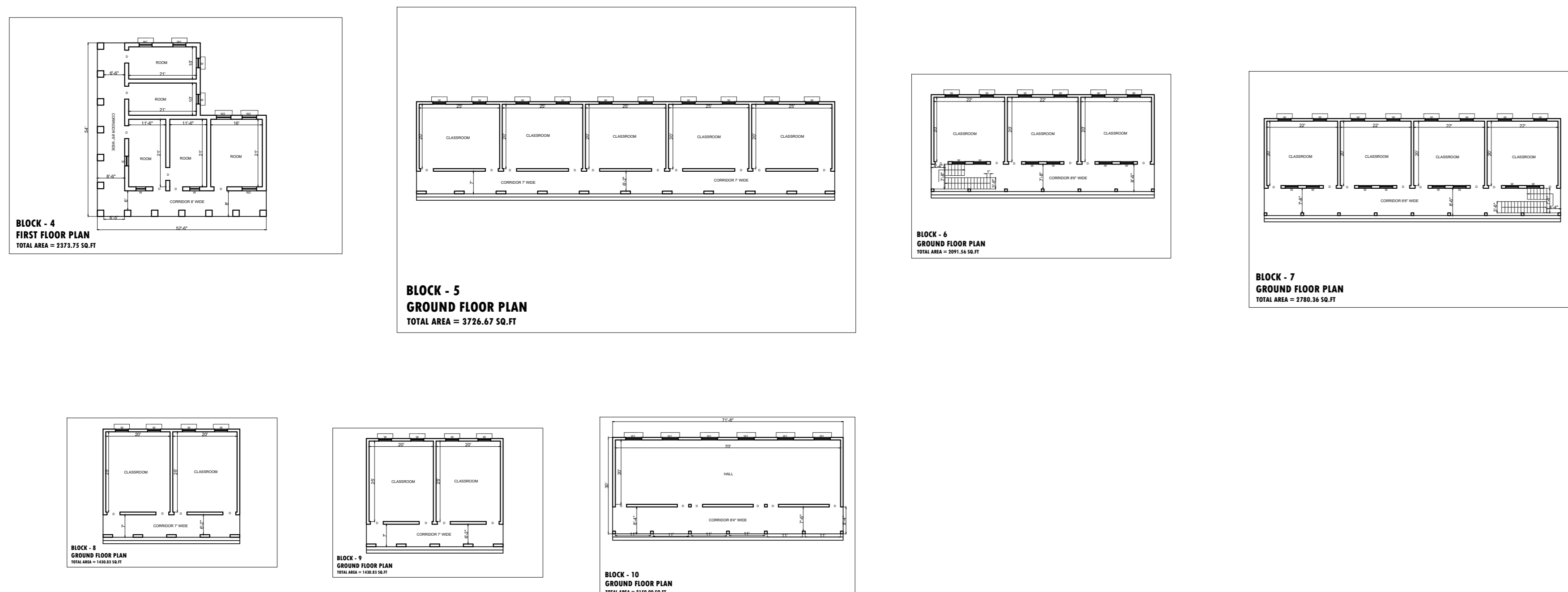
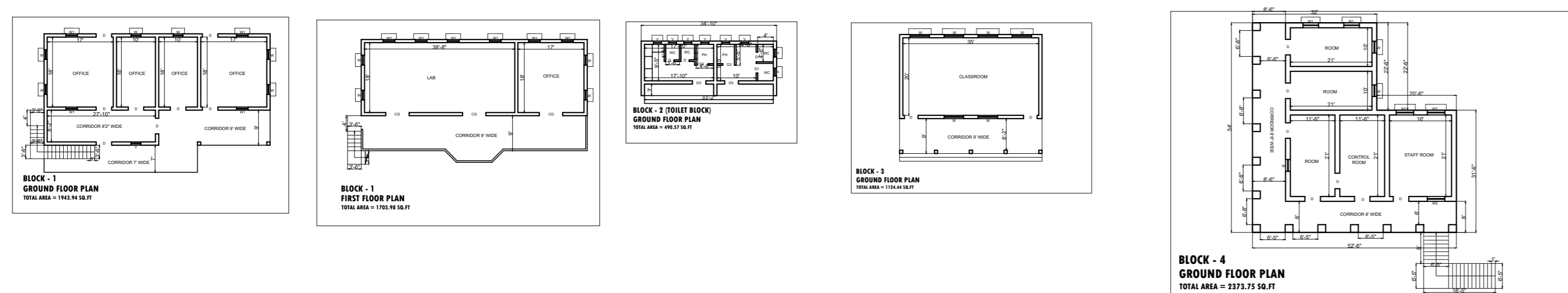
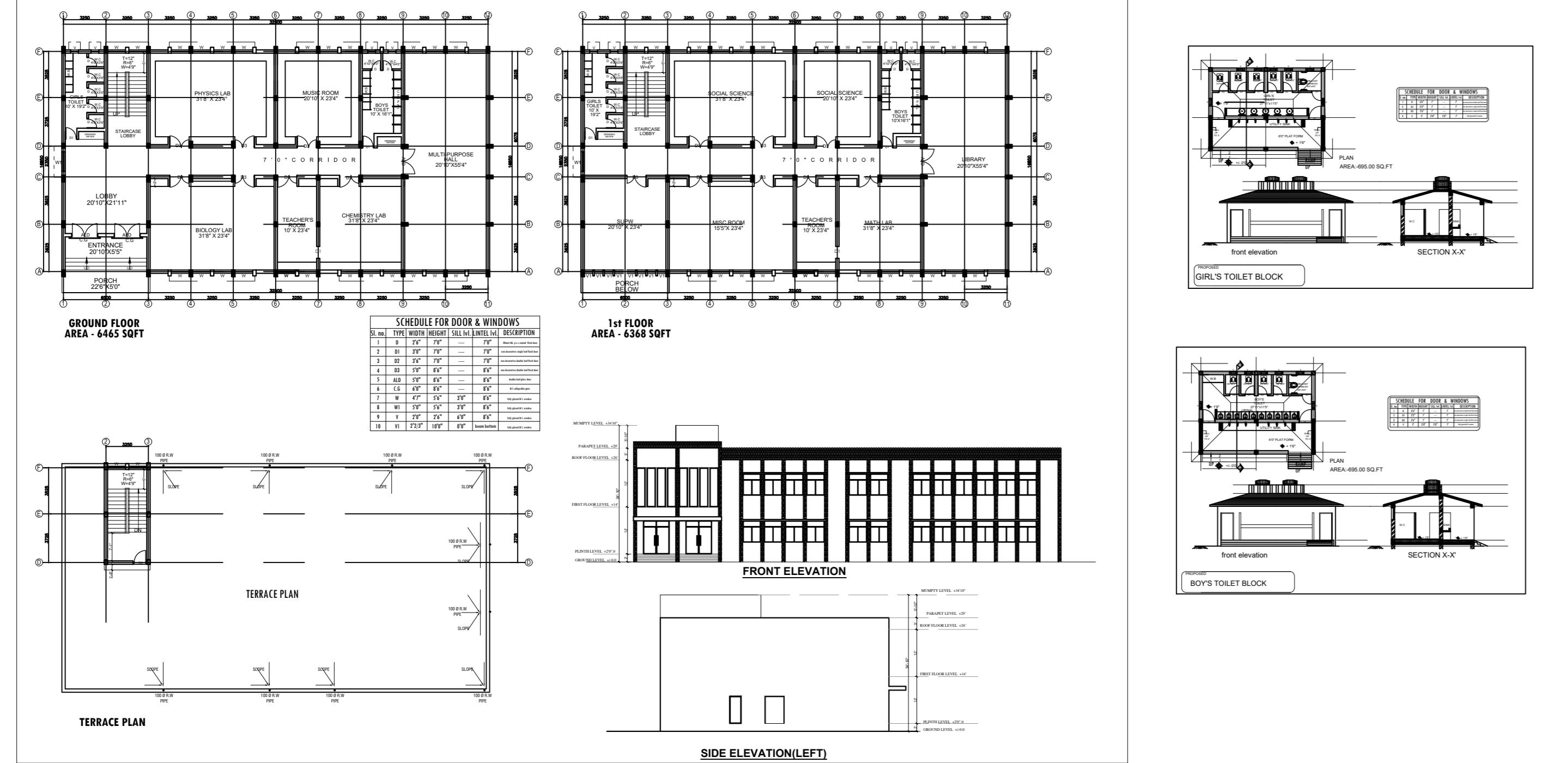


LAB & LIBRARY



CLIENT: **JEPC**

PROJ TITLE: **SCHOOL BUILDING FOR SS +2 SCHOOL, CHATRA**
AT MAUJA - KHATA NO- WARD NO- JHARKHAND.

PLOT NO- THANA NO- DIST- CHATRA, JHARKHAND.

AREA CALCULATION

PLOT AREA	AREA IN SQ.FT
AREA - 97646.70 SQ.FT (2.24 ACRE)	
TOTAL BUILT UP AREA OF ACADEMIC BLOCK	AREA- 9221.2 SQ.FT
TOTAL BUILT UP AREA OF LAB & LIBRARY BLOCK	AREA- 12833 SQ.FT
TOTAL BUILT UP AREA OF BLOCK - 1	AREA- 3647.92 SQ.FT
TOTAL BUILT UP AREA OF BLOCK - 2	AREA- 490.57 SQ.FT
TOTAL BUILT UP AREA OF BLOCK - 3	AREA- 1124.44 SQ.FT
TOTAL BUILT UP AREA OF BLOCK - 4	AREA- 4747.5 SQ.FT
TOTAL BUILT UP AREA OF BLOCK - 5	AREA- 3726.67 SQ.FT
TOTAL BUILT UP AREA OF BLOCK - 6	AREA- 2091.56 SQ.FT
TOTAL BUILT UP AREA OF BLOCK - 7	AREA- 2780.36 SQ.FT
TOTAL BUILT UP AREA OF BLOCK - 8	AREA- 1430.83 SQ.FT
TOTAL BUILT UP AREA OF BLOCK - 9	AREA- 1430.83 SQ.FT
TOTAL BUILT UP AREA OF BLOCK - 10	AREA- 2150 SQ.FT
TOTAL BUILT UP AREA OF TOILET BLOCK-1	AREA- 695 SQ.FT
TOTAL BUILT UP AREA OF TOILET BLOCK-2	AREA- 695 SQ.FT
TOTAL BUILT UP AREA- 47064.88 SQ.FT	